

Herschel iQ Heating Controls

R2 wireless receiver for T2 thermostat

Installation and operating instructions



Technical Information

Power supply:	Mains 120-240V Maximum current 10 Amps.
Installation:	Wall or ceiling-mounted
Accuracy:	+/- 0.5 °C
Ambient temperature limits:	0 - 50 °C
Maximum relative humidity:	85%
Protection Class:	IP20
Housing:	ARC+PC
Wireless:	433Mhz (RF) and 2.4GHz (Wifi)
Wireless Range:	35m
Warranty:	2 years
Certifications:	CE, RoHS, EMC, RED, LOT20

Compliance

Hereby, Herschel Infrared Ltd declares that the radio equipment type R2 Wireless Thermostat is in compliance with Directive 2014/53/EU. The full text of the EU declaration of conformity is available at the following internet address:

<https://www.herschel-infrared-technology-center.com/compliance/>

Safety

Use in accordance with the EU and national regulations. For indoor use only. Keep your device completely dry. This product must be installed by a competent person and in accordance with all the EU and national regulations.



Always isolate the AC mains supply before installing or working on any components that require 230V AC 50 Hz mains.

This appliance is rated IP20 and must be installed outside of the splash zones in bathrooms.

Please read these instructions carefully all the way through before installing & operating. Keep in a safe place.

R2 Wireless receiver for T2 thermostat

The Herschel iQ T2 Thermostat & R2 receiver are designed to regulate Herschel Infrared Heaters and incorporate the latest energy-saving features. These include Herschel's open window technology and an adaptive start function ensuring your room is always at the right temperature with the least energy use. When used with wifi you can also regulate your heating remotely using the SmartLife App. SmartLife also allows you to control the system by voice using Alexa or Google Assistant.

The R2 is the switch that turns your heaters on and off and must be wired to the heaters and mains power. It also acts as the internet gateway for the T2, enabling you to control the system with the SmartLife App.

Each R2 can handle up to 10 amps, so you will need sufficient R2 units to control the overall heating load. If you are in any doubt regarding calculation of heating loads, please consult a qualified electrician. Each R2 must be paired to a T2 to operate correctly. Pairing steps can be found in the instructions for the T2. On its own, the R2 provides only a limited Boost function and has no temperature control capability.

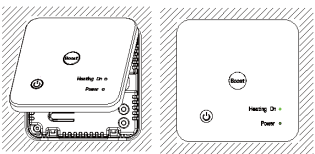
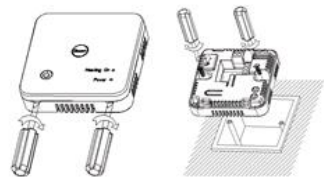
The R2 is rated IP20 and must be installed outside of the splash zones in bathrooms.

Please read these instructions carefully and keep in a safe place.

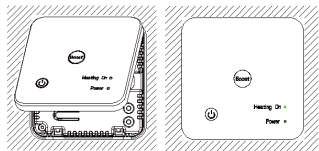
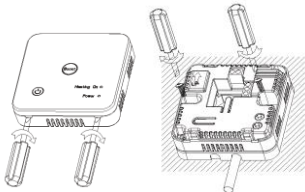
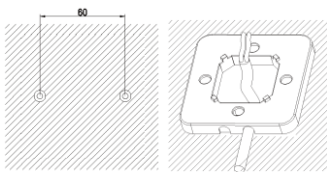
Installation

The Herschel IQ R2 can be installed by competent DIY persons but if in any doubt please consult a suitably qualified electrician or Herschel Accredited Installer. The R2 must be used in conjunction with a fused spur. The unit must not be used as a fused spur itself.

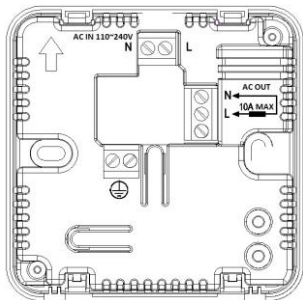
Mounting onto a recessed box:



Mounting onto a wall surface:



Wiring



Connect the live and neutral AC mains (marked AC IN 110-240v). This feed should come from the fused spur.

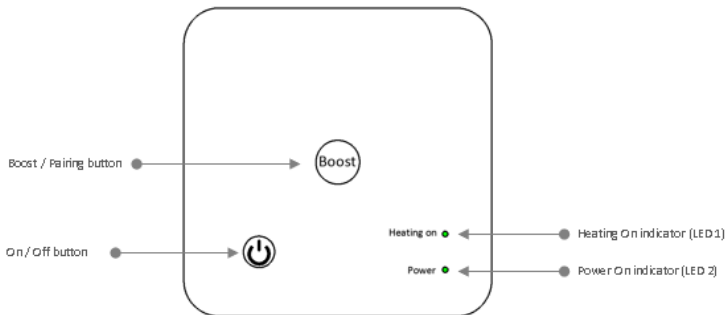
Remove the mains plug (if fitted) from the Herschel heater and connect to the terminals marked AC OUT 10A MAX.

Insert the earth wire from the mains and the earth wire from the heater into the terminal marked



IMPORTANT

Maximum load is 10A / 2.3kw at 230v. The R2 can be used to control several Herschel panel heaters but the maximum wattage of 2.3kw (2,300w) must not be exceeded. Do not use for any other non-Herschel heating devices. INDOOR USE ONLY.

R2 Buttons & Function

Pressing the BOOST button once with the power on will turn on the heating for 15 minutes regardless of T2 or App temperature settings. Pressing BOOST twice will turn it on for 30 minutes; three presses for 45 minutes and four presses for 1 hour.

Failsafe Mode

If the R2 loses connection with the wifi, it is still controllable locally via the T2. (The Red LED 1 will flash slowly while the wifi signal is lost).

If the R2 loses connection with the T2 it remains in the last setting it was placed in by the T2. (The Red LED 1 will flash slowly while the RF signal is lost).

2 Year Warranty

Register your product at the Help & FAQs section of your local Herschel website.. Within two years from date of purchase Herschel will repair or replace the R2 where the fault is due to defects in materials or workmanship. This warranty is for standard domestic use only and excludes commercial uses. In the event of a warranty claim please visit the Customer Service area of the Herschel Website and follow the Warranty Claim process. You will need proof of purchase.

Note your serial number here.